



PRODUCT GUIDE 2011-12

Professional Storage Systems



Official Sponsor Mikkel Mac (DEN) 2011 -2012



ASSORTMENT BOXES		PAGE	4
Boxxser Series		PAGE	4
CarryLite Series		PAGE	9
Assorter Series		PAGE	12
TOOLBOXES		PAGE	15
Tool Taco System		PAGE	15
Compact Series		PAGE	18
Open Toolbox		PAGE	19
SERVICECASE		PAGE	20
TRANSPORT CASES		PAGE	22
Solid Series		PAGE	22
Toolchest Series		PAGE	23
STORAGE CABINETS		PAGE	24
System 150		PAGE	24
System 250		PAGE	30
450 SHELVING SYSTEM		PAGE	32
SUPERCLIP SYSTEM		PAGE	37
STORAGE BIN SYSTEM		PAGE	42
RAACOSTAT SERIES - ESD		PAGE	45
INSERTS SERIES		PAGE	52

Boxxser is a complete, integrated box system that meets even the most discerning demands for order, clarity, individuality and efficiency.

The Boxxser series consists of six different boxes in two different heights, made of impact-resistant, unbreakable polycarbonate – the strongest plastic material on the market.

The boxes are equipped with practical double walls, which both provide room for securely protected internal hinges and give the boxes a fine appearance.

The boxes are available both as an empty version which can be equipped with removable inserts from scratch, and as a ready-made version with various inserts from the range.

Both versions are equipped with a grid in the bottom which, together with the O-profiles in the lid, restrains the inserts individually, so that it is not necessary to fill the boxes completely. This also ensures that the contents remain in place during transport.

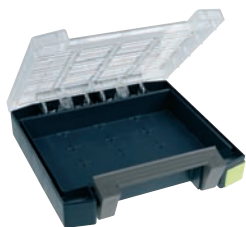
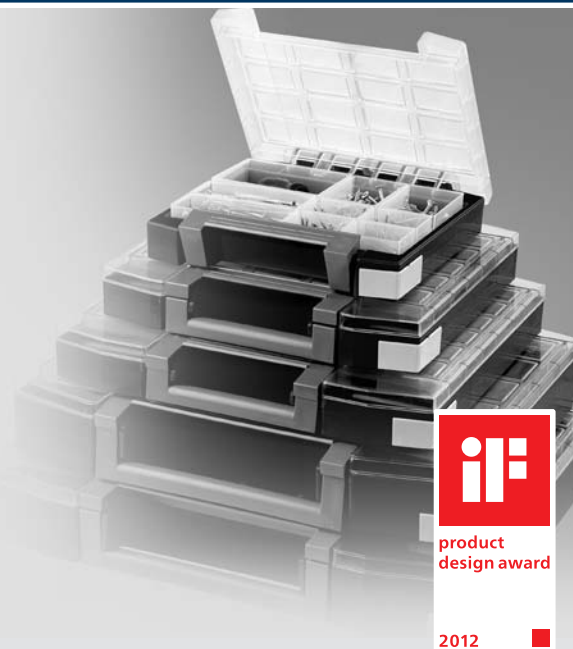
At the front of the box are two permanent compartments for temporary storage of small parts, and the replaceable ID corners in three different colours allow you to label the contents for easy identification.

Finally, the Boxxser boxes are equipped with an ergonomic closing and locking mechanism that allows you to close the box with one hand, and ensures that the contents stay in place.

As an accessory to the Boxxser range, trays with a range of inserts are available, which can be freely arranged to provide a wealth of functional solutions.

With a HandyBoxxser you can store four Boxxser in a small space, and still have easy access to the contents. HandyBoxxser also allows you to carry four Boxxser boxes in one hand.

The Boxxser series is designed to meet the needs of professionals working in an industrial environment, who want to be able to store and locate small objects in a systematic and efficient manner.



Boxxser 55 4x4-0

Item no.	Description	Size (HxWxD, mm)	Colour	Qt
138260	Small assorter box. Can be adapted with removable inserts of assorted sizes for small parts, tools and accessories. Strong transparent O-profile lid made of polycarbonate ensures contents don't mix.	55 x 241 x 225	raaco blue	5



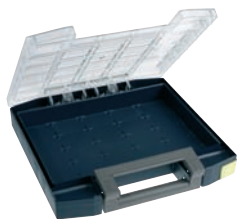
Boxxser 55 4x4-9

Item no.	Description	Size (HxWxD, mm)	Colour	Qt
138277	Small assorter box. Fitted with 9 removable inserts of assorted sizes for small parts, tools and accessories. Strong transparent O-profile lid made of polycarbonate ensures contents remains in place.	55 x 241 x 225	raaco blue	5



Boxxser 55 4x4-11

Item no.	Description	Size (HxWxD, mm)	Colour	Qt
138284	Small assorter box. Fitted with 11 removable inserts of assorted sizes for small parts, tools and accessories. Strong transparent O-profile lid made of polycarbonate ensures contents remains in place.	55 x 241 x 225	raaco blue	5



Boxxser 55 5X5-0

Item no.	Description	Size (HxWxD, mm)	Colour	Qt
138291	Assorter box. Can be adapted with removable inserts of assorted sizes for small parts, tools and accessories. Strong transparent O-profile lid made of polycarbonate ensures contents remains in place.	55 x 298 x 284	raaco blue	5



Boxxser 55 5X5-13

Item no.	Description	Size (HxWxD, mm)	Colour	Qt
138307	Assorter box. Fitted with 13 removable inserts of assorted sizes for small parts, tools and accessories. Strong transparent O-profile lid made of polycarbonate ensures contents remains in place.	55 x 298 x 284	raaco blue	5



Boxxser 55 5X5-15

Item no.	Description	Size (HxWxD, mm)	Colour	Qt
138314	Assorter box. Fitted with 15 removeable inserts of assorted sizes for small parts, tools and accessories. Strong transparent O-profile lid made of polycarbonate ensures contents remains in place.	55 x 298 x 284	raaco blue	5



Boxxser 55 6X6-0

Item no.	Description	Size (HxWxD, mm)	Colour	Qt
138321	Assorter box. Can be adapted with removable inserts of assorted sizes for small parts, tools and accessories. Strong transparent O-profile lid made of polycarbonate ensures contents remains in place.	55 x 354 x 323	raaco blue	5



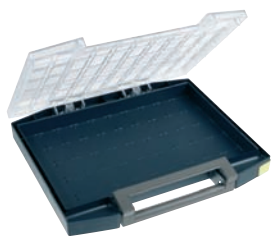
Boxxser 55 6X6-12

Item no.	Description	Size (HxWxD, mm)	Colour	Qt
138338	Medium assorter box. Fitted with 12 removable inserts of assorted sizes for small parts, tools and accessories. Strong transparent O-profile lid made of polycarbonate ensures contents remains in place.	55 x 354 x 323	raaco blue	5



Boxxser 55 6X6-14

Item no.	Description	Size (HxWxD, mm)	Colour	Qt
138345	Medium assorter box. Fitted with 14 removable inserts of assorted sizes for small parts, tools and accessories. Strong transparent O-profile lid made of polycarbonate ensures contents remains in place.	55 x 354 x 323	raaco blue	5



Boxxser 55 5x10-0

Item no.	Description	Size (HxWxD, mm)	Colour	Qt
134866	Assorter box. Can be adapted with removable inserts of assorted sizes for small parts, tools and accessories. Strong transparent O-profile lid made of polycarbonate ensures contents remains in place.	55 x 421 x 361	raaco blue	4



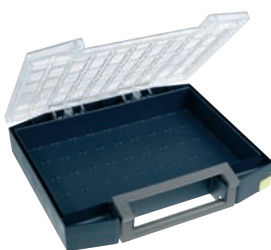
Boxxser 55 5x10-25

Item no.	Description	Size (HxWxD, mm)	Colour	Qt
134873	Assorter box. Fitted with 25 removable inserts of assorted sizes for small parts, tools and accessories. Strong transparent O-profile lid made of polycarbonate ensures contents remains in place.	55 x 421 x 361	raaco blue	4



Boxxser 55 5x10-45

Item no.	Description	Size (HxWxD, mm)	Colour	Qt
134897	Assorter box. Fitted with 45 removable inserts of assorted sizes for small parts, tools and accessories. Strong transparent O-profile lid made of polycarbonate ensures contents remains in place.	55 x 421 x 361	raaco blue	4



Boxxser 80 5x10-0

Item no.	Description	Size (HxWxD, mm)	Colour	Qt
134903	Assorter box. Can be adapted with removable inserts of assorted sizes for small parts, tools and accessories. Strong transparent O-profile lid made of polycarbonate ensures contents remains in place.	78 x 421 x 361	raaco blue	3



Boxxser 80 5x10-14

Item no.	Description	Size (HxWxD, mm)	Colour	Qt
134910	Assorter box. Fitted with 14 removable inserts of assorted sizes for small parts, tools and accessories. Strong transparent O-profile lid made of polycarbonate ensures contents remains in place.	78 x 421 x 361	raaco blue	3



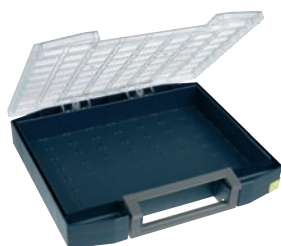
Boxxser 80 5x10-20

Item no.	Description	Size (HxWxD, mm)	Colour	Qt
134934	Assorter box. Fitted with 20 removable inserts of assorted sizes for small parts, tools and accessories. Strong transparent O-profile lid made of polycarbonate ensures contents remains in place.	78 x 421 x 361	raaco blue	3



Boxxser 80 5x10-25

Item no.	Description	Size (HxWxD, mm)	Colour	Qt
134941	Assorter box. Fitted with 25 removable inserts of assorted sizes for small parts, tools and accessories. Strong transparent O-profile lid made of polycarbonate ensures contents remains in place.	78 x 421 x 361	raaco blue	3



Boxxser 80 8x8-0

Item no.	Description	Size (HxWxD, mm)	Colour	Qt
134958	Large assorter box. Can be adapted with removable inserts of assorted sizes for small parts, tools and accessories. Strong transparent O-profile lid made of polycarbonate ensures content don't mix.	78 x 465 x 401	raaco blue	3



Boxxser 80 8x8-18

Item no.	Description	Size (HxWxD, mm)	Colour	Qt
134972	Large assorter box. Fitted with 18 removable inserts of assorted sizes for small parts, tools and accessories. Strong transparent O-profile lid made of polycarbonate ensures content don't mix.	78 x 465 x 401	raaco blue	3



Boxxser 80 8x8-20

Item no.	Description	Size (HxWxD, mm)	Colour	Qt
134989	Large assorter box. Fitted with 20 removable inserts of assorted sizes for small parts, tools and accessories. Strong transparent O-profile lid made of polycarbonate ensures content don't mix.	78 x 465 x 401	raaco blue	3



Boxxser 4xID-tag

Item no.	Description	Size (HxWxD, mm)	Colour	Qt
136099	Boxxser ID-Tag can eg. be used for colour coding, mounting of labels or hand writing.	27 x 85	raaco yellow	25



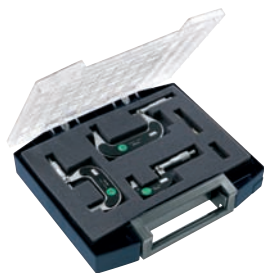
Boxxser 4xID-tag

Item no.	Description	Size (HxWxD, mm)	Colour	Qt
136105	Boxxser ID-Tag can eg. be used for colour coding, mounting of labels or hand writing.	27 x 85	raaco grey	25



Boxxser 4xID-tag

Item no.	Description	Size (HxWxD, mm)	Colour	Qt
136112	Boxxser ID-Tag can eg. be used for colour coding, mounting of labels or hand writing.	27 x 85	Green	25



Foam

Item no.	Description	Size (HxWxD, mm)	Colour	Qt
134583	Can be used for protection of special tools and instruments.	20 x 393 x 273	Grey	6



HandyBoxxser 4x4

Item no.	Description	Size (HxWxD,mm)	Colour	Qt
137935	HandyBoxxser, empty. The system allows you to store four boxes together in a minimum of space, while providing you with easy access to the contents, and all four can be carried with one hand!	342 x 290 x 247	raaco blue	1



HandyBoxxser 4x4x4

Item no.	Description	Size (HxWxD,mm)	Colour	Qt
137942	HandyBoxxser incl. 4xBoxxser 55 4x4-9. The system allows you to store four boxes together in a minimum of space, while providing you with easy access to the contents, and all four can be carried with one hand!	342 x 290 x 247	raaco blue	1



HandyBoxxser 5x5

Item no.	Description	Size (HxWxD, mm)	Colour	Qt
137959	HandyBoxxser, empty. The system allows you to store four boxes together in a minimum of space, while providing you with easy access to the contents, and all four can be carried with one hand!	342 x 347 x 305	raaco blue	1



HandyBoxxser 4x5x5

Item no.	Description	Size (HxWxD, mm)	Colour	Qt
137966	HandyBoxxser incl. 4xBoxxser 55 5x5-15. The system allows you to store four boxes together in a minimum of space, while providing you with easy access to the contents, and all four can be carried with one hand!	342 x 347 x 305	raaco blue	1



CarryLite is a functional range of lightweight boxes that are easy to handle and transport.

The CarryLite series consists of three sturdy boxes of the same size but in different heights, made of tough, unbreakable high-quality plastic.

At the front, the CarryLite is equipped with a two sliding locks that keeps the lid securely closed, while the rear side is equipped with strong external hinges that make the boxes extra tough.

The boxes come in two variants, with either partitions or removable inserts that allow you to arrange the compartments as needed.

The version with inserts is equipped with a grid at the bottom which restrains the inserts individually, so that it is not necessary to fill the box completely.

Moreover, this box version is equipped with U-profiles inside the lid that keep the contents in place during transport. The transparent lid also makes it easy to identify the contents.

As an accessory to the CarryLite, trays of inserts are available which provides great flexibility, and which can also be used elsewhere – for example in the kitchen drawer, in the workshop or in the garage.

A range of systems is also available to optimise the storage and transportation of the boxes and provide easy access to their contents.



CarryLite 55 5x10-0

Item no.	Description	Size (HxWxD, mm)	Colour	Qt
136266	CarryLite, empty. Can be sub-divided using inserts - see page 52-55. Fitted with sliding locks and handle. Made of polypropylene (PP) and polycarbonate (PC).	57 x 413 x 330	raaco blue	4



CarryLite 55 5x10-25/1

Item no.	Description	Size (HxWxD, mm)	Colour	Qt
136297	CarryLite with 25 inserts. Content: 25 x A8-1.	57 x 413 x 330	raaco blue	4



CarryLite 55 5x10-25/2

Item no.	Description	Size (HxWxD, mm)	Colour	Qt
136273	CarryLite with 25 inserts. Content: 10 x A9-1, 10 x A8-1, 5 x A7-1.	57 x 413 x 330	raaco blue	4



CarryLite 55 5x10-50

Item no.	Description	Size (HxWxD, mm)	Colour	Qt
136280	CarryLite with 50 inserts. Content: 50x A9-1.	57 x 413 x 330	raaco blue	4



CarryLite 80 5x10-0

Item no.	Description	Size (HxWxD, mm)	Colour	Qt
136303	CarryLite, empty. Can be sub-divided using inserts - see page 55-57. Fitted with sliding locks and handle. Made of polypropylene (PP) and polycarbonate (PC).	79 x 413 x 330	raaco blue	3



CarryLite 80 5x10-15

Item no.	Description	Size (HxWxD, mm)	Colour	Qt
136310	CarryLite with 15 inserts. Content: 5xBA8-1, 10xBA7-1.	79 x 413 x 330	raaco blue	3



CarryLite 80 5x10-20

Item no.	Description	Size (HxWxD, mm)	Colour	Qt
136334	CarryLite with 20 inserts. Content: 15 x BA8-1, 5 x BA7-1.	79 x 413 x 330	raaco blue	3



CarryLite 80 5x10-25

Item no.	Description	Size (HxWxD, mm)	Colour	Qt
136327	CarryLite with 25 inserts. Content: 25 x BA8-1.	79 x 413 x 330	raaco blue	3



CarryLite 150-9

Item no.	Description	Size (HxWxD, mm)	Colour	Qt
136341	CarryLite 150 with 8 dividers. Fitted with sliding locks and a handle. Made from polypropylene (PP) and polycarbonate (PC).	147 x 413 x 330	raaco blue	2



SafeBox 55x4

Item no.	Description	Size (HxWxD, mm)	Colour	Qt
136372	SafeBox incl. 2xCarryLite 55 5x10-25/1 and 2xCarryLite 55 5x10-25/2. Fitted with rails mounted on ballbearing and key-lock. Made of painted steel.	403 x 451 x 330	raaco blue	1



SafeBox 80x3

Item no.	Description	Size (HxWxD, mm)	Colour	Qt
136389	SafeBox incl. 3xCarryLite 80 5x10-15. Fitted with rails mounted on ballbearing and key-lock. Made of painted steel.	403 x 451 x 330	raaco blue	1



SafeBox 150x2

Item no.	Description	Size (HxWxD, mm)	Colour	Qt
136396	SafeBox incl. 2xCarryLite 150-9. Fitted with rails mounted on ballbearing and key-lock. Made of painted steel.	403 x 451 x 330	raaco blue	1



CL-Transporter 55x4

Item no.	Description	Size (HxWxD, mm)	Colour	Qt
136365	Transporter, complete. Portable carrying box with 2 x Carrylite 55-25/1 and 2 x Carrylite 55-25/2.	250 x 562 x 361	raaco blue	1



CL-Transporter 80x3

Item no.	Description	Size (HxWxD, mm)	Colour	Qt
136358	Transporter, complete. Portable carrying box with 2 x Carrylite 80-14 and 1 x Carrylite 80-20.	250 x 562 x 361	raaco blue	1



Dividers for CarryLite, Large

Item no.	Description	Size (HxWxD, mm)	Colour	Qt
136051	Dividers for CarryLite 150. Each bag contains 2 long dividers. Made of Polypropylene (PP).	134 x 273 x 10	raaco blue	6



Dividers for CarryLite, Small + Medium

Item no.	Description	Size (HxWxD, mm)	Colour	Qt
136044	Dividers for CarryLite 150. Each bag contains 2 medium dividers + 4 short dividers. Made of Polypropylene (PP).	134 x 153 x 10 134 x 115 x 10	raaco blue	6

The Assorter component boxes are a series of handy boxes that are easy to take with you anywhere

The boxes' practical partitioning means that the contents can be sorted and stored in a minimum of space.

The Assorter series consists of 12 boxes of various heights, widths and depths. The base is made of robust polypropylene plastic, while the lid is of transparent plastic, allowing the contents to be easily identified.

At the front, the boxes are equipped with a sliding latch that keeps the lid securely closed, while the rear side is equipped with strong external hinges that gives the boxes extra strength.

The boxes come in two variants, with either fixed compartments to cover basic storage needs, or removable inserts that provide great flexibility.

A range of empty Assorters is also available in various sizes, which can be fitted out from scratch using the various inserts in the range.

The larger Assorters are equipped with handles which make them easy to transport.

What's more, the Assorters with removable inserts are equipped with U-profiles inside the lid that keep the contents in place during transport.

As an accessory to the Assorter boxes, trays with a range of inserts are available, which can be freely arranged to provide functional box solutions for various needs.

raaco's HandyBox system was designed to enable Assorters to be transported in a smart way. The system allows you to store up to four Assorters together, in a minimum of space.

With the HandyBox, it's an easy matter to transport all four Assorters at once – they can be carried in one hand.



Pocketbox



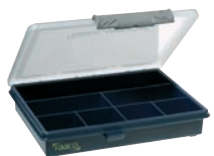
Item no.	Description	Size (HxWxD, mm)	Colour	Qt
118682	Pocketbox, empty. Designed for inserts A73, A75 or A78. Made of polypropylene (PP).	27 x 119 x 95	Clear	12

Assorter 6-o



Item no.	Description	Size (HxWxD, mm)	Colour	Qt
136129	Assorter, empty. Designed for inserts A71, A73, A75 and A78. Fitted with sliding locks. Made of polypropylene (PP).	32 x 175 x 143	raaco blue	18

Assorter 6-7



Item no.	Description	Size (HxWxD, mm)	Colour	Qt
136136	Assorter with 7 fixed compartments. Fitted with sliding locks. Made of polypropylene (PP).	32 x 175 x 143	raaco blue	18

Assorter 6-12



Item no.	Description	Size (HxWxD, mm)	Colour	Qt
136143	Assorter with 12 fixed compartments. Fitted with sliding locks. Made of polypropylene (PP).	32 x 175 x 143	raaco blue	18

Assorter 5-9



Item no.	Description	Size (HxWxD, mm)	Colour	Qt
136150	Assorter with 9 fixed compartments. Fitted with sliding locks. Made of polypropylene (PP).	43 x 240 x 195	raaco blue	12

Assorter 5-18



Item no.	Description	Size (HxWxD, mm)	Colour	Qt
136167	Assorter with 18 fixed compartments. Fitted with sliding locks. Made of polypropylene (PP).	43 x 240 x 195	raaco blue	12

Assorter 4-15



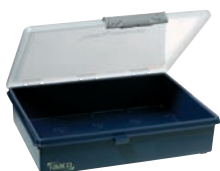
Item no.	Description	Size (HxWxD, mm)	Colour	Qt
136174	Assorter with 15 fixed compartments. Fitted with sliding locks. Made of polypropylene (PP).	57 x 338 x 260	raaco blue	7

Assorter 4-32



Item no.	Description	Size (HxWxD, mm)	Colour	Qt
136181	Assorter with 32 fixed compartments. Fitted with sliding locks. Made of polypropylene (PP).	57 x 338 x 260	raaco blue	7

Assorter 55 4x4-0



Item no.	Description	Size (HxWxD, mm)	Colour	Qt
136198	Assorter, empty. Can be sub-divided using inserts - see page 52-55. Fitted with sliding locks. Made of polypropylene (PP)	56 x 241 x 195	raaco blue	9



Assorter 55 4x8-0

Item no.	Description	Size (HxWxD, mm)	Colour	Qt
136204	Assorter, empty. Can be sub-divided using inserts - see page 52-55. Fitted with sliding locks and handle. Made of polypropylene (PP).	57 x 338 x 261	raaco blue	7



Assorter 55 4x8-15

Item no.	Description	Size (HxWxD, mm)	Colour	Qt
136211	Assorter with 15 inserts. 5xA9-1, 2xA9-2, 1xA9-3, 1xA9-4, 4xA8-1, 1xA8-2, 1xA7-1. Fitted with sliding locks and handle. Made of polypropylene (PP).	57 x 338 x 261	raaco blue	7



Assorter 55 4x8-17

Item no.	Description	Size (HxWxD, mm)	Colour	Qt
136228	Assorter with 17 inserts. 4xA9-1, 4xA9-2, 8xA8-1, 1xA7-1. Fitted with sliding locks and handle. Made of polypropylene (PP).	57 x 338 x 261	raaco blue	7



Assorter 80 4x8-0

Item no.	Description	Size (HxWxD, mm)	Colour	Qt
136235	Assorter, empty. Can be sub-divided using inserts - see page 55-57. Fitted with sliding locks. Made of polypropylene (PP).	78 x 338 x 261	raaco blue	5



HandyBox 55

Item no.	Description	Size (HxWxD, mm)	Colour	Qt
136259	HandyBox, empty. Portable carrying box for 4x Assorter 55 4x8.	310 x 376 x 265	Black	1



HandyBox 55x4

Item no.	Description	Size (HxWxD, mm)	Colour	Qt
136242	HandyBox, complete. Portable carrying box with 2x Assorter 55 4x8-15 and 2x Assorter 55 4x8-17.	310 x 376 x 265	Black/raaco blue	1

One system – endless possibilities

raaco's Tool Taco system is designed for those who will not settle for next best. The traditional toolbox has been transformed into a well-thought-out system with great flexibility and a sporty design that will give you years of good service.

Good craftsmen deserve the best – and you get that with the Tool Taco System. The system gives you the freedom to customise your own toolbox and modify it as necessary. This makes the Taco Tool System your indispensable companion in your daily work.

First choose the size of your Tool Taco, then equip it with the desired accessories.

The range includes pockets, holders and boxes that make it easy to keep track of tools and small parts. You can also use the Tool Fix tool holder as a space organiser, to create order and clarity in your Tool Taco toolbox.

Simply fit the accessory with clips or Velcro, and you're ready to go.



product design award

2012

Tool Taco L - 20"



Item no.	Description	Size (HxWxD, mm)	Colour	Qt
136006	Tool box system for individual configuration. Light-weight hard shell construction. Including: 1/4 Tool Fix, 1/2 Tool Fix, Boxxser 55 4x4-9 and an ergonomically designed padded shoulder strap	256 x 504 x 234	raaco blue	1

Tool Taco XL - 24"



Item no.	Description	Size (HxWxD, mm)	Colour	Qt
136013	Tool box system for individual configuration. Light-weight hard shell construction. Including: 2 x 1/2 Tool Fix, Boxxser 55 4x4-9 and an ergonomically designed padded shoulder strap	311 x 616 x 278	raaco blue	1

1/4 Tool Fix



Item no.	Description	Size (HxWxD, mm)	Colour	Qt
136020	Unique efficient holder for tools of any shape or size (max. Ø 30 mm). Strong velcro for mounting inside of Tool Taco and Open Pouch.	150 x 118 x 40	raaco grey	4

1/2 Tool Fix



Item no.	Description	Size (HxWxD, mm)	Colour	Qt
136037	Unique efficient holder for tools of any shape or size (max. Ø 30 mm). Strong velcro for mounting inside of Tool Taco and Open Pouch.	150 x 238 x 40	raaco grey	2

¼ Open Pouch



Item no.	Description	Size (HxWxD, mm)	Colour	Qt
771009	For storage of accessories and consumables. Can be combined with ¼ Tool Fix. Strong clip with lock for secure mounting on Tool Taco.	155 x 146 x 55	raaco blue	1

½ Open Pouch



Item no.	Description	Size (HxWxD, mm)	Colour	Qt
771016	For storage of accessories and consumables. Can be combined with ½ Tool Fix or Boxxser 55 4x4. With 2 strong clips for east mounting on Tool Taco.	155 x 255 x 55	raaco blue	1

¼ Pouch w Cover



Item no.	Description	Size (HxWxD, mm)	Colour	Qt
771023	For storage of accessories and consumables. Strong clip with lock for secure mounting on Tool Taco.	160 x 150 x 65	raaco blue	1

½ Pouch w Cover



Item no.	Description	Size (HxWxD, mm)	Colour	Qt
771030	For storage of accessories and consumables. With 2 strong clips for easy mounting on Tool Taco.	160 x 265 x 65	raaco blue	1

Saw Holder



Item no.	Description	Size (HxWxD, mm)	Colour	Qt
771047	Holder for saw (max. 22") and spirit level (max. width 70 mm). With two clips for easy mounting on Tool Taco.	155 x 570 x 25	raaco blue	1

Universal Holder



Item no.	Description	Size (HxWxD, mm)	Colour	Qt
771054	Holder for long tools and items (50-100 mm width). With two clips for easy mounting on Tool Taco.	90 x 280 x 10	raaco blue	1

Cover L



Item no.	Description	Size (HxWxD, mm)	Colour	Qt
771061	Protection against rain & dust. The cover is water resistant.	535 x 495 x 5	raaco blue	1

Cover XL



Item no.	Description	Size (HxWxD, mm)	Colour	Qt
771078	Protection against rain & dust. The cover is water resistant.	695 x 615 x 5	raaco blue	1



Compact design with great functionality

The raaco Compact is a compact and highly robust toolbox that is both practical and very useful.

Compact toolboxes are available in several variants and sizes. Whichever version you choose, you will get award-winning design with high durability.

You can both sit and stand on your Compact toolbox. And when the toolbox is not in use, you can easily fold the handle down and stack it in the storeroom.

In short, the Compact has everything a modern toolbox needs for professional use – and more.



Compact 15



Item no.	Description	Size (HxWxD, mm)	Colour	Qt
136563	Compact 15 including dividers for sub-dividing the tote tray. Weight 1,5 KG. Toolbox made of polypropylene (PP).	170 x 426 x 215	raaco blue	4

Compact 20



Item no.	Description	Size (HxWxD, mm)	Colour	Qt
136570	Compact 20 including 6 assorted inserts. Weight 1,9 KG. Toolbox made of polypropylene (PP). Flexible arrangement of compartments using inserts.	190 x 474 x 239	raaco blue	5

Compact 27



Item no.	Description	Size (HxWxD, mm)	Colour	Qt
136587	Compact 27 including 6 assorted inserts. Weight 2,6 KG. Toolbox made of polypropylene (PP). Flexible arrangement of compartments using inserts. 2 drawers for small items.	248 x 474 x 239	raaco blue	4

Compact 37



Item no.	Description	Size (HxWxD, mm)	Colour	Qt
136594	Compact 37 including 7 assorted inserts and dividers. Weight 3,7 KG. Toolbox made of polypropylene (PP). Flexible arrangement of compartments using inserts. Castors or a carrying strap can be fitted. (Available separately).	230 x 540 x 296	raaco blue	1



Compact 47

Item no.	Description	Size (HxWxD, mm)	Colour	Qt
136600	Compact 47 including 7 assorted inserts and dividers. Weight 4,6 KG. Toolbox made of PP. Flexible arrangement of compartments using inserts. 2 drawers for small items. Castors or a carrying strap can be fitted. (Available separately).	292 x 540 x 296	raaco blue	1



Compact 50

Item no.	Description	Size (HxWxD, mm)	Colour	Qt
136617	Compact 50 including 10 assorted inserts and divider. Weight 4,6 KG. Toolbox made of polypropylene (PP). Flexible arrangement of compartments using inserts. Castors or a carrying strap can be fitted. (Available separately).	260 x 621 x 311	raaco blue	1



Compact 62

Item no.	Description	Size (HxWxD, mm)	Colour	Qt
136624	Compact 62 incl. 10 assorted inserts and divider. Weight 7,1 kg. Toolbox made of PP. Flexible arrangement of compartments using inserts. 4 drawers for small items. Castors or a carrying strap can be fitted. (Available separately).	322 x 621 x 311	raaco blue	1



Open ToolBox

Item no.	Description	Size (HxWxD, mm)	Colour	Qt
137195	Open ToolBox with 3 compartments for storage of tools and drawer for small items and accessories. Made of polypropylene (PP). Weight 1.8 KG.	230 x 476 x 228	raaco blue	4



Strap Compact

Item no.	Description	Size (HxWxD, mm)	Colour	Qt
114059	Adjustable carrying strap for Compact 37, 47, 50 and 62.	-	Black	4



Wheels Compact

Item no.	Description	Size (HxWxD, mm)	Colour	Qt
113656	4 rubber castors for Compact 37, 47, 50 and 62.	Ø50	Black	1

Robust and flexible

If you want to keep track of your tools and make sure they are well protected during transport, the ServiceCase is for you. The raaco ServiceCase is an extremely robust toolbox.

The shell is made of polycarbonate, the strongest plastic material on the market – as used, for example, in police shields.

raaco's ServiceCase comes in two variants, with either a combination lock or key lock. This allows you to select the version that suits you best.

If the contents of your ServiceCase are very heavy, there is also a version with a built-in trolley. The trolley version is also available with either a combination lock or key lock.



ServiceCase - code

Item no.	Description	Size (HxWxD, mm)	Colour	Qt
136785	Code lock. Tool case with 4 small and 2 large raacoFix, 2 accessory boxes and 2 dividers for subdividing the bottom of the case.	187 x 535 x 402	raaco blue	1



ServiceCase - key

Item no.	Description	Size (HxWxD, mm)	Colour	Qt
136792	Key lock. Tool case with 4 small and 2 large raacoFix, 2 accessory boxes and 2 dividers for subdividing the bottom of the case.	187 x 535 x 402	raaco blue	1



ServiceCase Trolley - code

Item no.	Description	Size (HxWxD, mm)	Colour	Qt
136808	Code lock. Tool case with 4 small and 2 large raacoFix, 2 accessory boxes and 2 dividers for subdividing the bottom of the case. Fitted with a trolley, providing a convenient transportation of the ServiceCase.	215 x 600 x 402	raaco blue	1



ServiceCase Trolley - key

Item no.	Description	Size (HxWxD, mm)	Colour	Qt
136815	Key lock. Tool case with 4 small and 2 large raacoFix, 2 accessory boxes and 2 dividers for subdividing the bottom of the case. Fitted with a trolley, providing a convenient transportation of the ServiceCase.	215 x 600 x 402	raaco blue	1

raacoFix Large



Item no.	Description	Size (HxWxD, mm)	Colour	Qt
136822	Large raacoFix cassette for storing tools. Can be mounted to partition. Max. 2 pcs per ServiceCase. Made of polypropylene (PP) and Thermo Plastic Elastomer rubber (TPE).	140 x 242 x 38	raaco grey/ raaco yellow	1

raacoFix Small



Item no.	Description	Size (HxWxD, mm)	Colour	Qt
136839	Small raacoFix cassette for storing tools. Can be mounted to partition and to large raacoFix. Max 4 pcs per ServiceCase. Made of polypropylene (PP) and Thermo Plastic Elastomer rubber (TPE).	100 x 242 x 38	raaco grey/ raaco yellow	1

3xServiceCase-Divider



Item no.	Description	Size (HxWxD, mm)	Colour	Qt
136846	Dividers for subdividing base of ServiceCase. Made of polypropylene (PP).	100 x 12 x 277	raaco blue	1

2xServiceCase-Box



Item no.	Description	Size (HxWxD, mm)	Colour	Qt
125024	Transparent box for small tools and accessories. Made of polypropylene (PP).	52 x 275 x 98	Clear	1



Maximum space utilisation

raaco Solid is a series of boxes you can use for almost anything. The boxes are made of very strong polypropylene, and are both shock-resistant and resistant towards water and dust.

Solid is designed to ensure maximum space utilization. The boxes can be stacked on top of each other, and they fit perfectly onto transport pallets, which reduces transportation costs.

The boxes are available in three different sizes, and can be both locked and sealed.



Solid 1



Item no.	Description	Size (HxWxD, mm)	Colour	Qt
136754	Small transport box made of polypropylene (PP). Weight 0.45 KG. Two click locks and integrated handle. Can be secured with padlock.	125 x 275 x 175	raaco blue	8

Solid 2



Item no.	Description	Size (HxWxD, mm)	Colour	Qt
136761	Medium transport box made of polypropylene (PP). Weight 1.11 KG. Two click locks and integrated handle. Can be secured with padlock.	170 x 370 x 275	raaco blue	4

Solid 3



Item no.	Description	Size (HxWxD, mm)	Colour	Qt
136778	Large transport box made of polypropylene (PP). Weight 2.28 KG. Two click locks and integrated handle. Can be secured with padlock.	170 x 570 x 370	raaco blue	1

Spacious storage on wheels

The raaco Toolchest is a spacious chest that you can use to store and transport large machinery, tools and much more.

The chest is equipped with wheels and an ergonomic handle, and includes two practical tool trays. It is possible to fasten tools in the lid.

The Toolchest can be locked with a padlock. Available in two different sizes.



Toolchest 75



Item no.	Description	Size (HxWxD,mm)	Colour	Qt
715706	Large storage box for large equipment and tools. User-friendly design with wheels and handle. 2 internal tray's and click locks. Can be secured with padlock. Tools can be mounted inside the lid. Volume: 75 L. Weight: 7,1 kg.	416 x 675 x 472	Black/blue	1

Toolchest 100



Item no.	Description	Size (HxWxD,mm)	Colour	Qt
715720	Large storage box. User-friendly design with wheels and handle. 2 internal tray's and click locks. Can be secured with padlock. Tools can be mounted inside the lid. Maximal storage. Volume: 100 L. Weight: 8,1 kg.	493 x 775 x 472	Black/blue	1



Order, clarity and easy access

Despite their simple design, the cabinets are highly functional and can hold large quantities of small parts. This makes them the ideal choice when you want to make optimum use of storage space.

The cabinet series consists of drawer racks in three heights and two depths, with eight different drawer sizes.

The shelves are made of painted steel, and have drawers of durable transparent plastic, allowing you to identify their contents.

The modular cabinet system means that not only is it a simple matter to put together a solution that works – if your storage needs change over time, you can also easily add additional modules. This gives your solution a long life.

You can join up to twelve cabinets of the same height together in a single space-saving system that gives you clear organisation of everything you need.

Choose between stationary and mobile solutions.



Cabinet 1260-00

Item no.	Description	Size (HxWxD, mm)	Colour	Qt
137386	Cabinet with 60x150-00 drawers. Each drawer can be divided into 4 compartments. Cabinet made of painted steel and drawers made of polypropylene (PP).	552 x 306 x 150	raaco blue	1



Drawer 150-00

Item no.	Description	Size (HxWxD, mm)	Colour	Qt
108980	Drawer, type 150-00.	41 x 55 x 153	Clear	120



Divider 150-00

Item no.	Description	Size (HxWxD, mm)	Colour	Qt
101981	Dividers (60 in each pack).	32 x 52 x 2	Clear	25



Label 150-00

Item no.	Description	Size (HxWxD, mm)	Colour	Qt
109024	Labels (60 in each pack).	10 x 52 x 1	White	25



Cabinet 1248-01

Item no.	Description	Size (HxWxD, mm)	Colour	Qt
137393	Cabinet with 48x150-01 drawers. Each drawer can be divided into 16 compartments. Cabinet made of painted steel and drawers made of polypropylene (PP).	552 x 306 x 150	raaco blue	1

Drawer 150-01



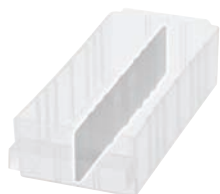
Item no.	Description	Size (HxWxD, mm)	Colour	Qt
104692	Drawer, type 150-01.	41 x 67 x 153	Clear	96

Divider 150-01 medium



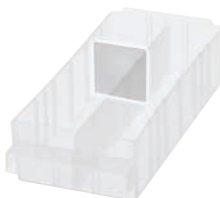
Item no.	Description	Size (HxWxD, mm)	Colour	Qt
101998	Dividers N (48 in each pack).	31 x 64 x 2	Clear	25

Divider 150-01 large



Item no.	Description	Size (HxWxD, mm)	Colour	Qt
111386	Dividers L (24 in each pack).	31 x 137 x 2	Clear	25

Divider 150-01 small



Item no.	Description	Size (HxWxD, mm)	Colour	Qt
111393	Dividers S (72 in each pack).	31 x 32 x 2	Clear	25

Label 150-01



Item no.	Description	Size (HxWxD, mm)	Colour	Qt
107761	Labels (48 in each pack).	10 x 64 x 1	White	25

Cabinet 1224-02



Item no.	Description	Size (HxWxD, mm)	Colour	Qt
137409	Cabinet with 24x150-02 drawers. Each drawer can be divided into 3 compartments. Cabinet made of painted steel and drawers made of polypropylene (PP).	552 x 306 x 150	raaco blue	1

Drawer 150-02



Item no.	Description	Size (HxWxD, mm)	Colour	Qt
104715	Drawer, type 150-02.	64 x 91 x 154	Clear	48

Divider 150-02



Item no.	Description	Size (HxWxD, mm)	Colour	Qt
102032	Dividers (24 in each pack).	49 x 87 x 2	Clear	25

Label 150-02



Item no.	Description	Size (HxWxD, mm)	Colour	Qt
107778	Labels (24 in each pack).	18 x 87 x 1	White	25

Cabinet 1208-03



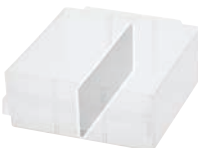
Item no.	Description	Size (HxWxD, mm)	Colour	Qt
137416	Cabinet with 8x150-03 drawers. Each drawer can be divided into 4 compartments. Cabinet made of painted steel and drawers made of polypropylene (PP).	552 x 306 x 150	raaco blue	1

Drawer 150-03



Item no.	Description	Size (HxWxD, mm)	Colour	Qt
104708	Drawer, type 150-03.	64 x 279 x 155	Clear	16

Divider 150-03/04



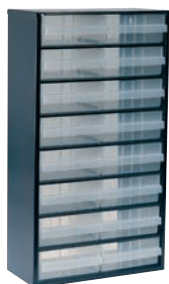
Item no.	Description	Size (HxWxD, mm)	Colour	Qt
102049	Dividers (16 in each pack).	50 x 134 x 2	Clear	25

Label 150-03



Item no.	Description	Size (HxWxD, mm)	Colour	Qt
107785	Labels (8 in each pack).	18 x 275 x 1	White	25

Cabinet 1216-04



Item no.	Description	Size (HxWxD, mm)	Colour	Qt
137423	Cabinet with 16x150-04 drawers. Each drawer can be divided into 4 compartments. Cabinet made of painted steel and drawers made of polypropylene (PP).	552 x 306 x 150	raaco blue	1

Drawer 150-04



Item no.	Description	Size (HxWxD, mm)	Colour	Qt
109178	Drawer, type 150-04.	64 x 139 x 155	Clear	32

Label 150-04



Item no.	Description	Size (HxWxD, mm)	Colour	Qt
109017	Labels (16 in each pack).	18 x 135 x 1	White	25

Cabinet 1240-123



Item no.	Description	Size (HxWxD, mm)	Colour	Qt
137430	Cabinet with 40 assorted drawers. 36x150-01, 3x 150-02 and 1x150-03. Cabinet made of painted steel and drawers made of polypropylene (PP).	552 x 306 x 150	raaco blue	1

Cabinet Turntable 1200



Item no.	Description	Size (HxWxD, mm)	Colour	Qt
137447	Turntable - empty. Can be fitted with any 12x1200 series cabinets.	1760 x Ø680	raaco blue	1



Cabinet 945-00

Item no.	Description	Size (HxWxD, mm)	Colour	Qt
137454	Cabinet with 45x150-00 drawers. Each drawer can be divided into 4 compartments. Cabinet made of painted steel and drawers made of polypropylene (PP).	417 x 306 x 150	raaco blue	1



Cabinet 936-01

Item no.	Description	Size (HxWxD, mm)	Colour	Qt
137461	Cabinet with 36x150-01 drawers. Each drawer can be divided into 16 compartments. Cabinet made of painted steel and drawers made of polypropylene (PP).	417 x 306 x 150	raaco blue	1



Cabinet 918-02

Item no.	Description	Size (HxWxD, mm)	Colour	Qt
137478	Cabinet with 18x150-02 drawers. Each drawer can be divided into 3 compartments. Cabinet made of painted steel and drawers made of polypropylene (PP).	417 x 306 x 150	raaco blue	1



Cabinet 906-03

Item no.	Description	Size (HxWxD, mm)	Colour	Qt
137485	Cabinet with 6x150-03 drawers. Each drawer can be divided into 4 compartments. Cabinet made of painted steel and drawers made of polypropylene (PP).	417 x 306 x 150	raaco blue	1



Cabinet 928-123

Item no.	Description	Size (HxWxD, mm)	Colour	Qt
137492	Cabinet with 28 assorted drawers. 24x150-01, 3x 150-02 and 1x150-03. Cabinet made of painted steel and drawers made of polypropylene (PP).	417 x 306 x 150	raaco blue	1



Cabinet Turntable 900

Item no.	Description	Size (HxWxD, mm)	Colour	Qt
137515	Turntable - empty. Can be fitted with any 12x900 series cabinets.	1600 x Ø680	raaco blue	1



Cabinet Rack 900

Item no.	Description	Size (HxWxD, mm)	Colour	Qt
137522	Free-standing rack - empty. Can be fitted with any 12x900 series cabinets. Handles & Castors also available..	1600 x 622 x 570	raaco blue	1



H&C w Brake

Item no.	Description	Size (HxWxD, mm)	Colour	Qt
112369	4 rubber-tyred castors (2 fitted with brakes) and 2 handles for fitting on racks.	Castors Ø70	Black	1



Cabinet 630-00

Item no.	Description	Size (HxWxD, mm)	Colour	Qt
137539	Cabinet with 30x150-00 drawers. Each drawer can be divided into 4 compartments. Cabinet made of painted steel and drawers made of polypropylene (PP).	283 x 306 x 150	raaco blue	1



Cabinet 624-01

Item no.	Description	Size (HxWxD, mm)	Colour	Qt
137546	Cabinet with 24x150-01 drawers. Each drawer can be divided into 16 compartments. Cabinet made of painted steel and drawers made of polypropylene (PP).	283 x 306 x 150	raaco blue	1



Cabinet 612-02

Item no.	Description	Size (HxWxD, mm)	Colour	Qt
137553	Cabinet with 12x150-02 drawers. Each drawer can be divided into 3 compartments. Cabinet made of painted steel and drawers made of polypropylene (PP).	283 x 306 x 150	raaco blue	1



Cabinet 616-123

Item no.	Description	Size (HxWxD, mm)	Colour	Qt
137560	Cabinet with 16 assorted drawers. 12x150-01, 3x 150-02 and 1x150-03. Cabinet made of painted steel and drawers made of polypropylene (PP).	282 x 306 x 150	raaco blue	1



Cabinet 250/24-1

Item no.	Description	Size (HxWxD, mm)	Colour	Qt
137577	Cabinet with 24x250-1 drawers. Each drawer can be divided into 4 compartments. Cabinet made of painted steel and drawers made of polypropylene (PP).	435 x 357 x 255	raaco blue	1



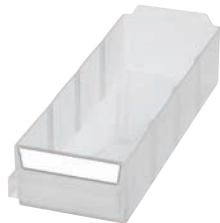
Drawer 250-01

Item no.	Description	Size (HxWxD, mm)	Colour	Qt
107273	Drawer, type 250-1.	58 x 80 x 239	Clear	48



Divider 250-01

Item no.	Description	Size (HxWxD, mm)	Colour	Qt
106757	Dividers (36 in each pack).	46 x 75 x 2	Clear	24



Label 250-01

Item no.	Description	Size (HxWxD, mm)	Colour	Qt
107792	Labels (24 in each pack).	15 x 75 x 1	White	25



Cabinet 250/8-2

Item no.	Description	Size (HxWxD, mm)	Colour	Qt
137584	Cabinet with 8x250-2 drawers. Each drawer can be divided into 4 compartments. Cabinet made of painted steel and drawers made of polypropylene (PP). Each drawer can be divided into 4 compartments.	435 x 357 x 255	raaco blue	1



Drawer 250-02

Item no.	Description	Size (HxWxD, mm)	Colour	Qt
107259	Drawer, type 250-2.	92 x 159 x 239	Clear	16



Divider 250-02

Item no.	Description	Size (HxWxD, mm)	Colour	Qt
106764	Dividers (12 in each pack).	80 x 154 x 2	Clear	12



Label 250-02

Item no.	Description	Size (HxWxD, mm)	Colour	Qt
107815	Labels (8 in each pack).	32 x 155 x 1	White	25



Cabinet 250/6-3

Item no.	Description	Size (HxWxD, mm)	Colour	Qt
137591	Cabinet with 6x250-3 drawers. Each drawer can be sub-divided using inserts. Cabinet made of painted steel and drawers made of polypropylene (PP). Each drawer can be sub-divided using inserts. See pages 52-55.	435 x 357 x 255	raaco blue	1



Drawer 250-03

Item no.	Description	Size (HxWxD, mm)	Colour	Qt
103114	Drawer, type 250-3.	57 x 320 x 240	Clear	7



Label 250-03

Item no.	Description	Size (HxWxD, mm)	Colour	Qt
107822	Labels (6 in each pack).	15 x 315 x 1	White	25



Cabinet Turntable 250

Item no.	Description	Size (HxWxD, mm)	Colour	Qt
137607	Turntable - empty. Can be fitted with any 12x250 series cabinets.	1600 x Ø880	raaco blue	1



Cabinet Rack 250

Item no.	Description	Size (HxWxD, mm)	Colour	Qt
137614	Free standing rack - empty. Can be fitted with any 12x250 series cabinets. Handles & Castors are also available.	1600 x 705 x 570	raaco blue	1

A system with great stability

The 450 Shelving System consists essentially of two parts: shelves and posts. Thanks to the extremely robust construction, each section can be assembled entirely without the use of cross-bracing. The shelves are fitted using just a single screw and bracket per corner – it couldn't be simpler!

Start with a single section, then supplement this with two additional posts and some shelves – now you have two sections. In principle, your solution is infinitely expandable. The more you build on, the more stable will be your shelving.

If you combine the shelving system with its associated shelf bins, you can make optimum use of your space.

The shelf bins have handles which make them easy to carry and move around. They are also equipped with stop edges, so they can be pulled all the way out without falling out of the shelving.

If you equip your shelf bins with dividers, you can sort and label the contents of each compartment clearly.

The partitions are rounded at the base, making it is easy to get hold of even the smallest items. You can also mount a front on each of the bins, which will protect the contents extra well and make the drawer easy to label clearly.

raaco has developed several different shelving systems. Before making your choice, you should consider how much space your shelf bins should be able to accommodate.



Shelf 90-31



Item no.	Description	Size (HxWxD,mm)	Colour	Qt
125543	Shelf, 310 mm deep. (Pack of 3). Load capacity 100 kg per shelf, weight evenly distributed. (Safety factor 2).	36 x 885 x 310	Galvanized	3
118828	Shelf, 310 mm deep. (Pack of 4). Load capacity 100 kg per shelf, weight evenly distributed. (Safety factor 2).	36 x 885 x 310	Galvanized	4
118835	Shelf, 310 mm deep. (Pack of 5). Load capacity 100 kg per shelf, weight evenly distributed. (Safety factor 2).	36 x 885 x 310	Galvanized	5
118071	Shelf, 310 mm deep. (Pack of 6). Load capacity 100 kg per shelf, weight evenly distributed. (Safety factor 2).	36 x 885 x 310	Galvanized	6

Shelf 90-40



Item no.	Description	Size (HxWxD,mm)	Colour	Qt
118842	Shelf, 400 mm deep. (Pack of 3). Load capacity 100 kg per shelf, weight evenly distributed. (Safety factor 2).	36 x 885 x 400	Galvanized	3
118859	Shelf, 400 mm deep. (Pack of 4). Load capacity 100 kg per shelf, weight evenly distributed. (Safety factor 2).	36 x 885 x 400	Galvanized	4
126182	Shelf, 400 mm deep. (Pack of 5). Load capacity 100 kg per shelf, weight evenly distributed. (Safety factor 2).	36 x 885 x 400	Galvanized	5
118088	Shelf, 400 mm deep. (Pack of 6). Load capacity 100 kg per shelf, weight evenly distributed. (Safety factor 2).	36 x 885 x 400	Galvanized	6



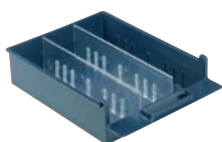
1000 Post

Item no.	Description	Size (HxWxD,mm)	Colour	Qt
136907	2 uprights with 1 m height, 2 units can be connected to a 2 m pole.	1000 x 31 x 31	Galvanized	2
136853	4 uprights with 1 m height, 2 units can be connected to a 2 m pole.	1000 x 31 x 31	Galvanized	4



Shelf Bin 4-800

Item no.	Description	Size (HxWxD, mm)	Colour	Qt
136693	Shelf drawer for 310 mm shelf (type 9031). Made of polypropylene (PP).	100 x 280 x 381	raaco blue	12



Divider 4-800 large

Item no.	Description	Size (HxWxD, mm)	Colour	Qt
107617	(Bag of 12).	79 x 317 x 8	Clear	12



Divider 4-800 medium

Item no.	Description	Size (HxWxD, mm)	Colour	Qt
108003	(Bag of 24).	77 x 128 x 20	Clear	12



Divider 4-800 small

Item no.	Description	Size (HxWxD, mm)	Colour	Qt
108010	(Bag of 36).	77 x 84 x 20	Clear	12



Front 4-800/label

Item no.	Description	Size (HxWxD, mm)	Colour	Qt
107600	Front plate/label for 4-800 shelf drawer (Bag of 6).	50 x 260 x 1	Clear	8

Shelf Bin 5-600



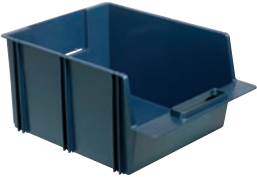
Item no.	Description	Size (HxWxD, mm)	Colour	Qt
136709	Shelf bin for 310 mm shelf (type 9031), with rear grip. Made of polypropylene (PP).	111 x 168 x 375	raaco blue	15

Shelf Bin 6-1100



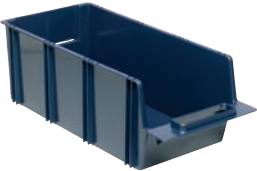
Item no.	Description	Size (HxWxD, mm)	Colour	Qt
136716	Shelf bin for 310 mm shelf (type 9031), with rear grip. Made of polypropylene (PP).	136 x 210 x 375	raaco blue	12

Shelf Bin 8-2000



Item no.	Description	Size (HxWxD, mm)	Colour	Qt
136723	Shelf bin for 310 mm shelf (type 9031), with rear grip. Made of polypropylene (PP).	186 x 280 x 375	raaco blue	6

Shelf Bin 7-1600/40



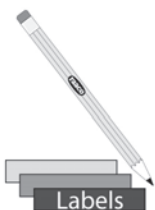
Item no.	Description	Size (HxWxD, mm)	Colour	Qt
136730	Shelf bin for 400 mm shelf (type 9040), with rear grip. Made of polypropylene (PP).	161 x 210 x 465	raaco blue	12

Shelf Bin 9-2800/40



Item no.	Description	Size (HxWxD, mm)	Colour	Qt
136747	Shelf bin for 400 mm shelf (type 9040), with rear grip. Made of polypropylene (PP).	211 x 280 x 465	raaco blue	6

Label Shelf Bins

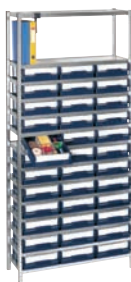


Item no.	Description	Size (HxWxD, mm)	Colour	Qt
111362	Labels for shelf bins (Bag of 12).	26 x 104 x 1	White	25



Shelving 8-2000

Item no.	Description	Size (HxWxD, mm)	Colour	Qt
181112	Shelving with 24 bins: 9x9031 (galv.), 24x8-2000, 8x1000 (galv.).	2000 x 920 x 340	Galva./ raaco blue	1



Shelving 4-800

Item no.	Description	Size (HxWxD, mm)	Colour	Qt
181129	Shelving with 36 bins without front plates: 14x9031, 36x4-800, 8x1000. Front plate can be ordered separately.	2000 x 920 x 340	Galva./ raaco blue	1



Shelving 6-1100

Item no.	Description	Size (HxWxD, mm)	Colour	Qt
181136	Shelving with 36 bins: 10x9031, 36x6-1100, 8x1000.	2000 x 920 x 340	Galva./ raaco blue	1



Shelving MIX A/31

Item no.	Description	Size (HxWxD, mm)	Colour	Qt
181143	Shelving with 48 bins: 12x9031, 30x5-1600, 8x1000, 12x6-1100, 6x8-2000.	2000 x 920 x 340	Galva./ raaco blue	1



Shelving MIX B/31

Item no.	Description	Size (HxWxD, mm)	Colour	Qt
181150	Shelving with 54 bins: 13x9031, 30x5-600, 8x1000, 24x6-1100.	2000 x 920 x 340	Galva./ raaco blue	1



Shelving 5-600

Item no.	Description	Size (HxWxD, mm)	Colour	Qt
181167	Shelving with 60 bins: 13x9031, 60x5-600, 8x1000.	2000 x 920 x 340	Galva./ raaco blue	1



Shelving 9-2800

Item no.	Description	Size (HxWxD, mm)	Colour	Qt
181174	Shelving with 18 bins: 7x9040, 18x9-2800, 8x1000.	2000 x 920 x 430	Galva./ raaco blue	1



Shelving Mix C/40

Item no.	Description	Size (HxWxD, mm)	Colour	Qt
181181	Shelving with 24 bins: 9x9040, 12x7-1600, 8 x1000, 12x9-2800.	2000 x 920 x 430	Galva./ raaco blue	1



Shelving 7-1600

Item no.	Description	Size (HxWxD, mm)	Colour	Qt
181198	Shelving with 36 bins: 10x9040, 36x7-1600, 8x1000.	2000 x 920 x 430	Galva./ raaco blue	1



Full clarity and great flexibility

SuperClip is a simple but highly practical storage system, consisting of a perforated panel and various types of clips. raaco's SuperClip system allows you to create manageable storage solutions for tools, accessories and much more, so that you will always have easy access to everything.

The smart clips are made of hard-wearing polyacetal and galvanised steel, and have a large load-bearing capacity.

The clips can be placed anywhere in the perforated panel, and can be fastened without tools with just one touch – and moved again just as easily.

Choose between many different types of hooks and holders.

You can choose between wall-mounted or free-standing SuperClip systems. The wall-mounted systems can be expanded horizontally and vertically, while the free-standing systems can be made mobile with wheels and handles.

If you combine your SuperClip system with raaco storage bins, you will gain full flexibility.



Clip 1 Single Hook



Item no.	Description	Size (HxWxD,mm)	Colour	Qt
110709	Length 30 mm. (Bag of 5).	60 x 27 x 47	Black	10
110716	Length 60 mm. (Bag of 5).	60 x 27 x 79	Black	10
110723	Length 90 mm. (Bag of 5).	60 x 27 x 107	Black	10

Clip 2 Double Hook



Item no.	Description	Size (HxWxD, mm)	Colour	Qt
110730	Length 30 mm. (Bag of 3).	60 x 27 x 47	Black	10
110747	Length 60 mm. (Bag of 3).	60 x 27 x 79	Black	10

Clip 3 Angled Hook



Item no.	Description	Size (HxWxD,mm)	Colour	Qt
110754	Length 25 mm. (Bag of 5).	60 x 27 x 47	Black	10
110761	Length 50 mm. (Bag of 5).	60 x 27 x 71	Black	10
110778	Length 75 mm. (Bag of 5).	60 x 27 x 96	Black	10

Clip 4 Hammer Holder



Item no.	Description	Size (HxWxD,mm)	Colour	Qt
110785	Length 40 mm. (Bag of 3).	61 x 44 x 70	Black	10
110792	Length 50 mm. (Bag of 3).	61 x 50 x 79	Black	10

Clip 5 Pliers Holder



Item no.	Description	Size (HxBxTD,mm)	Colour	Qt
110808	Length 17 mm. (3 in each bag).	60 x 45 x 53	Black	10
110815	Length 20 mm. (3 in each bag).	60 x 62 x 61	Black	10

Clip 6 Spring Clip



Item no.	Description	Size (HxWxD,mm)	Colour	Qt
110631	Diameter 12 mm. (6 in each bag).	60 x 27 x 37	Black	10
110648	Diameter 18 mm. (6 in each bag).	60 x 27 x 46	Black	10
110655	Diameter 24 mm. (6 in each bag).	60 x 33 x 56	Black	10

Clip 8 Pipe Holder



Item no.	Description	Size (HxWxD,mm)	Colour	Qt
110679	Diameter 30 mm. (Bag of 4).	80 x 37 x 57	Black	10
103169	Diameter 50 mm. (Bag of 1).	114 x 59 x 77	Black	10

Clip 9 Box



Item no.	Description	Size (HxWxD,mm)	Colour	Qt
104562	1x9-box.	58 x 108 x 83	Black	10

Clip 10 Power Drill Holder



Item no.	Description	Size (HxWxD,mm)	Colour	Qt
108928	(Bag of 4).	60 x 27 x 93	Black	10

Clip 11 Spanner Holder



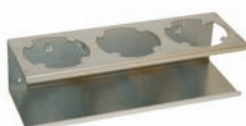
Item no.	Description	Size (HxWxD,mm)	Colour	Qt
114165	(Bag of 1).	145 x 237 x 46	Black	10

Clip 12 Drill Bit Holder



Item no.	Description	Size (HxWxD,mm)	Colour	Qt
114172	(Bag of 1).	65 x 94 x 77	Black	10

Clip 13 Can Holder



Item no.	Description	Size (HxWxD, mm)	Colour	Qt
770002	Can holder (1 pc/bag)	80 x 310 x 100	Aluminium	1

Clip 14 Angle Grinder Holder



Item no.	Description	Size (HxWxD, mm)	Colour	Qt
770019	Angle Grinder holder (1pc/bag)	15 x 177 x 60	Aluminium	1

Clip Mix 53



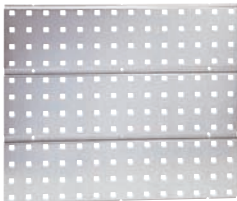
Item no.	Description	Size (HxWxD, mm)	Colour	Qt
110532	Bag of 54 assorted SuperClips.	-	Black	1

Clip Mix 84



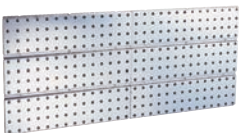
Item no.	Description	Size (HxWxD, mm)	Colour	Qt
110549	Bag of 84 assorted SuperClips.	-	Black	1

Tool Wall Panel



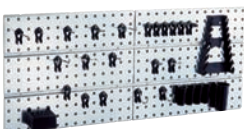
Item no.	Description	Size (HxWxD, mm)	Colour	Qt
118347	Perforated panel for SuperClip.	440 x 520 x 11	Galvanized	6

Tool Wall Panel x2



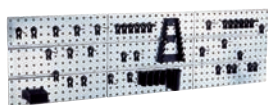
Item no.	Description	Size (HxWxD, mm)	Colour	Qt
114035	Double length perforated panel for SuperClip.	440 x 1040 x 11	Galvanized	6

Tool Wall Panel x2/Clips



Item no.	Description	Size (HxWxD, mm)	Colour	Qt
109642	2 perforated panels with 28 assorted SuperClips.	440 x 1040 x 11	Galvanized	1

Tool Wall Panel x3/Clips



Item no.	Description	Size (HxWxD, mm)	Colour	Qt
109659	3 perforated panels with 44 assorted SuperClips.	440 x 1560 x 11	Galvanized	1



Tool Rack

Item no.	Description	Size (HxWxD, mm)	Colour	Qt
137621	Double rack with 6 perforated panels, empty. Handles & castors are available as extra accessory.	1600 x 571 x 570	raaco blue	1



Tool Bin Rack

Item no.	Description	Size (HxWxD, mm)	Colour	Qt
137638	Double rack with 4 perforated panels and 2 Bin Wall Panels. Handles & castors are available as extra accessory.	1600 x 571 x 570	raaco blue	1

H&C w Brake



Item no.	Description	Size (HxWxD, mm)	Colour	Qt
112369	4 rubber-tyred castors (2 fitted with brakes) and 2 handles for fitting on racks.	Castors Ø70	Black	1

Spacious and easily accessible

If you are looking for capacious but space-saving storage for your small parts, raaco's storage bins are the ideal solution.

The open boxes give you fast and direct access to the contents, so that you can work efficiently throughout the day. The bins are available in several different sizes and are designed to provide easy access to the contents, even with the smallest bins.

With raaco's storage bin systems, you can create customised storage solutions for your workplace.

Before you decide on a solution, you should consider how much space you have available. The rotating carousel and floor stand take up very little space and can be placed in the middle of a room, while the wall panels require a relatively large amount of wall space.

You can choose between stationary and mobile solutions.



Bin 2-80



Item no.	Description	Size (HxWxD, mm)	Colour	Qt
136631	Bin 2-80. Made of polypropylene (PP). Covers a total of 2 slots in height on Bin Wall Panel.	50 x 125 x 133	raaco blue	48

Bin 3-160



Item no.	Description	Size (HxWxD, mm)	Colour	Qt
136648	Bin 3-160. Made of polypropylene (PP). Covers a total of 3 slots in height on Bin Wall Panel.	75 x 125 x 173	raaco blue	32

Bin 4-280



Item no.	Description	Size (HxWxD, mm)	Colour	Qt
136655	Bin 4-280. Made of polypropylene (PP). Covers a total of 4 slots in height on Bin Wall Panel.	101 x 125 x 228	raaco blue	24

Bin 5-460



Item no.	Description	Size (HxWxD, mm)	Colour	Qt
136662	Bin 5-460. Made of polypropylene (PP). Covers a total of 5 slots in height on Bin Wall Panel.	126 x 125 x 300	raaco blue	16

Bin 13



Item no.	Description	Size (HxWxD, mm)	Colour	Qt
136679	Bin 16-1800. Made of polypropylene (PP). Covers a total of 5 slots in height on Bin Wall Panel.	200 x 256 x 365	raaco blue	6

Bin Wall Panel



Item no.	Description	Size (HxWxD, mm)	Colour	Qt
118330	Wall panel for bins.	440 x 520 x 11	Galvanized	6

Wall Panel x2/2-80



Item no.	Description	Size (HxWxD, mm)	Colour	Qt
181204	2x wall panels with 48x2-80 bins.	440 x 1040 x 144	Galva./ raaco blue	1

Wall Panel x2/3-160



Item no.	Description	Size (HxWxD, mm)	Colour	Qt
181211	2 wall panels with 32x3-160 bins.	440 x 1040 x 184	Galva./ raaco blue	1

Wall Panel x2/4-280

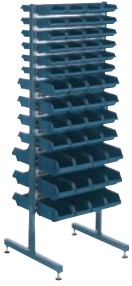


Item no.	Description	Size (HxWxD, mm)	Colour	Qt
181228	2 wall panels with 24x4-280 bins.	440 x 1040 x 239	Galva./ raaco blue	1

Bins Carousel



Item no.	Description	Size (HxWxD, mm)	Colour	Qt
137362	Bin carousel - empty. 3 cartons of bins can be fitted in any combination. 288 slots. (12-1100 Bin does not fit on the bin carousel).	1600 x Ø655	Galva/ raaco blue	1



Bin Rack

Item no.	Description	Size (HxWxD, mm)	Colour	Qt
137379	Bin rack - empty. 3 cartons of bins can be fitted in any combination. 288 slots. Handles & castors are available as extra accessory.	1600 x 571 x 570	raaco blue	1



H&C w Brake

Item no.	Description	Size (HxWxD, mm)	Colour	Qt
112369	4 rubber-tyred castors (2 fitted with brakes) and 2 handles for fitting on racks.	Castors Ø70	Black	1



Table Rack TR16-234

Item no.	Description	Size (HxWxD, mm)	Colour	Qt
136686	Table rack with 16 bins of 3 sizes. 8x2-80. 4x3-160. 4x4-280.	388 x 500 x 360	raaco blue	1



Label Bins

Item no.	Description	Size (HxWxD, mm)	Colour	Qt
107839	Labels for 2-80, 3-160, 4-280, 5-460 and Bin 13.	10 x 125 x 1	White	25

Anti-static storage

A rapidly increasing number of products, spare parts, tools, etc., are composed of electronic components, which are often incredibly sensitive to the damage caused by static electricity. This damage can occur not only during the actual production process, but also when the items are stored, transported, etc.

raacostat is a complete series of boxes, tool trays, shelving and drawers that can provide 100 percent protection against static electricity. Like all other raaco products, the raacostat series is naturally capable of being combined in numerous different ways, to meet almost any individual need.

raacostat has shown its value in practice in a wide range of companies around the world. The reports all agree: fault percentages have fallen off markedly thanks to the use of raacostat products. As a consequence, the efficiency of these companies has risen correspondingly.

The raacostat series is constructed of a special plastic containing carbon fibres, which makes the products permanently antistatic. This protection will not diminish over time or through intensive use, and neither will weather conditions or the surroundings in general have any effect on its efficiency.

raacostat naturally fulfils the EN 61340-5-1 standard and all other international requirements. Surface resistance: $10^4 - 10^9 \Omega$.



ESD Cabinet 1260-00

Item no.	Description	Size (HxWxD, mm)	Colour	Qt
102513	ESD Cabinet with 60 drawers, type 150-00. Each drawer can be divided into 2 compartments. Earth wire included.	552 x 306 x 150	Galva/black	1



ESD 150-00 Drawer

Item no.	Description	Size (HxWxD, mm)	Colour	Qt
112260	ESD Drawer, type 150-00.	41 x 55 x 153	Black	120



ESD 150-00 Divider

Item no.	Description	Size (HxWxD, mm)	Colour	Qt
118248	ESD Dividers for drawer 150-00 (60 in each pack).	32 x 52 x 2	Black	25



ESD Cabinet 1248-01

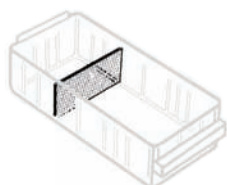
Item no.	Description	Size (HxWxD, mm)	Colour	Qt
102520	ESD Cabinet with 48 drawers, type 150-01. Each drawer can be divided into 6 compartments. Earth wire included.	552 x 306 x 150	Galva/black	1

ESD 150-01 Drawer



Item no.	Description	Size (HxWxD, mm)	Colour	Qt
105910	ESD Drawer, type 150-01.	41 x 67 x 153	Black	96

ESD 150-01 Divider



Item no.	Description	Size (HxWxD, mm)	Colour	Qt
103985	ESD Dividers for drawer 150-01 (48 in each pack).	31 x 64 x 1	Black	25

ESD Cabinet 1224-02



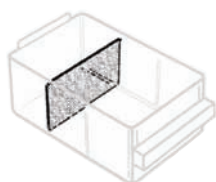
Item no.	Description	Size (HxWxD, mm)	Colour	Qt
102537	ESD Cabinet with 24 drawers, type 150-02. Each drawer can be divided into 3 compartments. Earth wire included.	552 x 306 x 150	Galva/black	1

ESD 150-02 Drawer



Item no.	Description	Size (HxWxD, mm)	Colour	Qt
107853	ESD Drawer, type 150-02.	60 x 91 x 154	Black	48

ESD 150-02 Divider



Item no.	Description	Size (HxWxD, mm)	Colour	Qt
113298	ESD Dividers for drawer 150-02 (24 in each pack).	49 x 87 x 2	Black	25

ESD Cabinet Turntable 1200



Item no.	Description	Size (HxWxD, mm)	Colour	Qt
102568	Turntable-empty. Can be fitted with any 12 x ESD 1200 series cabinets. Earth wire included.	1760 x Ø680	Galva	1



ESD Cabinet 945-00

Item no.	Description	Size (HxWxD, mm)	Colour	Qt
118231	ESD Cabinet with 45 drawers, type 150-00. Each drawer can be divided into 2 compartments. Earth wire included.	417 x 306 x 150	Galva/black	1



ESD Cabinet 936-01

Item no.	Description	Size (HxWxD, mm)	Colour	Qt
109246	ESD Cabinet with 36 drawers, type 150-01. Each drawer can be divided into 6 compartments. Earth wire included.	417 x 306 x 150	Galva/black	1



ESD Cabinet 918-02

Item no.	Description	Size (HxWxD, mm)	Colour	Qt
102544	ESD Cabinet with 18 drawers, type 150-02. Each drawer can be divided into 3 compartments. Earth wire included.	417 x 306 x 150	Galva/black	1



ESD Cabinet Turntable 900

Item no.	Description	Size (HxWxD, mm)	Colour	Qt
102964	Turntable-empty. Can be fitted with any 12 x ESD 900 series cabinets. Earth wire included.	1600 x Ø680	Galva	1



ESD Cabinet 250/6-3

Item no.	Description	Size (HxWxD, mm)	Colour	Qt
103725	ESD Cabinet with 6 drawers, type 250-3. Each drawer can be sub-divided using inserts. Earth wire included.	435 x 357 x 255	Galva/black	1



ESD 250-3 Drawer

Item no.	Description	Size (HxWxD, mm)	Colour	Qt
111775	ESD Drawer, type 250-3.	57 x 320 x 240	Black	7



ESD Cabinet Turntable 250

Item no.	Description	Size (HxWxD, mm)	Colour	Qt
103749	Turntable-empty. Can be fitted with any 12 x ESD 250 series cabinets. Earth wire included.	1600 x Ø880	Galva	1



ESD Bin 2-80

Item no.	Description	Size (HxWxD, mm)	Colour	Qt
109277	ESD Bin 2-80. Covers a total of 2 slots on Bin Wall Panel and Carousel.	50 x 125 x 133	Black	48



ESD Bin 3-160

Item no.	Description	Size (HxWxD, mm)	Colour	Qt
109291	ESD Bin 3-160. Covers a total of 3 slots on Bin Wall Panel and Carousel.	75 x 125 x 173	Black	32



ESD Bin 4-280

Item no.	Description	Size (HxWxD, mm)	Colour	Qt
109314	ESD Bin 4-280. Covers a total of 4 slots on Bin Wall Panel and Carousel.	101 x 125 x 228	Black	24



ESD Bin 5-460

Item no.	Description	Size (HxWxD, mm)	Colour	Qt
113021	ESD Bin 5-460. Covers a total of 5 slots on Bin Wall Panel and Carousel.	126 x 125 x 300	Black	16



ESD Bin Wall Panel

Item no.	Description	Size (HxWxD, mm)	Colour	Qt
106573	Wall panel for ESD bins. 48 slots. Earth wire included.	440 x 520 x 11	Galva	6



ESD Bin Carousel

Item no.	Description	Size (HxWxD, mm)	Colour	Qt
114158	Bins carousel-empty. 3 cartons of ESD bins can be fitted in any combination. 288 slots. Earth wire included.	1600 x Ø655	Galva	1



ESD Bin Table Rack/Bins

Item no.	Description	Size (HxWxD, mm)	Colour	Qt
106825	ESD Table rack with 16 bins. 8 x 3-160. 8 x 2-80. Earth wire included.	388 x 500 x 305	Galva/black	1



ESD PSC4-01 Servicecase

Item no.	Description	Size (HxWxD, mm)	Colour	Qt
104203	ESD Professional Service Case, empty. Can be subdivided using ESD inserts. Fitted with sliding locks and handle.	57 x 338 x 260	Black	1



ESD PSB4-15 Servicebox

Item no.	Description	Size (HxWxD, mm)	Colour	Qt
104111	ESD Professional Service Box with 15 fixed compartments. Fitted with sliding locks and handle.	57 x 338 x 260	Black	1



ESD PSB4-32 Servicebox

Item no.	Description	Size (HxWxD, mm)	Colour	Qt
104173	ESD Professional Service Box with 32 fixed compartments. Fitted with sliding locks and handle.	57 x 338 x 260	Black	1



ESD Compact 15

Item no.	Description	Size (HxWxD, mm)	Colour	Qt
104432	ESD Toolbox including removable tote tray with handle. Tote tray can be sub-divided using ESD Inserts (extra accessory) See page 50.	170 x 426 x 215	Black	1

ESD 32A9-1 Insert - in tray



Item no.	Description	Size (HxWxD, mm)	Colour	Qt
102995	ESD A9-1 inserts. 32 per tray. Can be used to sub-divide 250-3 drawer.	47 x 315 x 220	Black	6

ESDA9-1 Insert



Item no.	Description	Size (HxWxD, mm)	Colour	Qt
104555	ESD A9-1 inserts. Can be used to sub-divide 250-3 drawer.	47 x 39 x 55	Black	96

ESD 16A8-1 Insert - in tray



Item no.	Description	Size (HxWxD, mm)	Colour	Qt
100618	ESD A8-1 inserts. 16 per tray. Can be used to sub-divide 250-3 drawer.	47 x 315 x 220	Black	6

ESD A8-1 Insert



Item no.	Description	Size (HxWxD, mm)	Colour	Qt
104630	ESD A8-1 inserts. Can be used to sub-divide 250-3 drawer.	47 x 55 x 79	Black	48

ESD A7-1 Insert



Item no.	Description	Size (HxWxD, mm)	Colour	Qt
125109	ESD A7-1 inserts. Can be used to sub-divide 250-3 drawer.	47 x 79 x 109	Black	24

ESD Insert A71



Item no.	Description	Size (HxWxD, mm)	Colour	Qt
118187	ESD A71 insert. 20 per carton. Half-height insert - 1 compartment. Can be used to sub-divide 250-3 drawer.	24 x 79 x 109	Black	21

ESD Insert A75



Item no.	Description	Size (HxWxD, mm)	Colour	Qt
118200	ESD A75 insert. 20 per carton. Half-height insert - 5 small compartments. Can be used to sub-divide 250-3 drawer.	24 x 79 x 109	Black	21

A world of possibilities

raaco's inserts allow you to create different storage solutions for small parts – easily, quickly and efficiently.

Whether you need to install boxes, tool boxes, drawers or anything else, you can create order and clarity with these practical inserts.

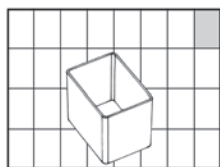
The inserts are available in several styles and three different heights, which can be combined in all sorts of ways and changed as needed. This means you can always create complete storage solutions tailored to specific tasks.

The inserts are extremely robust and can tolerate a wide range of chemicals. The transparent, high-quality plastic makes it easy to identify the contents and obtain rapid clarity.

The smart inserts are available both individually and in convenient trays. The trays have grids in the bottom which holds the inserts in place. Put your trays in the kitchen drawer, or use them in a drawer in your raaco vehicle equipment – the inserts will always stay where they should be.



Insert 55 A9-1



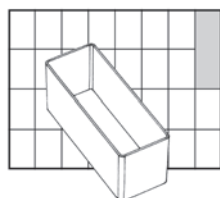
Item no.	Description	Size (HxWxD, mm)	Colour	Qt
100274	A9-1 insert. 96 per carton. Can also be used for Assorter 55, Boxxser 55, CarryLite 55, Compact and drawer 250-3. Made of polypropylene (PP).	47 x 39 x 55	Clear	96

Insert 55 16xA9-1 - in grid tray



Item no.	Description	Size (HxWxD, mm)	Colour	Qt
105347	Insert 55 A9-1. Can also be used for Assorter 55, Boxxser 55, CarryLite 55, Compact and drawer 250-3. Tray with 16 pieces.	47 x 220 x 160	Clear	12

Insert 55 A9-2



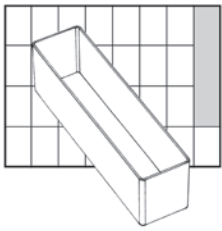
Item no.	Description	Size (HxWxD, mm)	Colour	Qt
114578	A9-2 insert. 48 per carton. Can also be used for Assorter 55, Boxxser 55, CarryLite 55, Compact and drawer 250-3. Made of polypropylene (PP).	47 x 39 x 109	Clear	48

Insert 55 8xA9-2 - in grid tray



Item no.	Description	Size (HxWxD, mm)	Colour	Qt
136419	Insert 55 A9-2. Can also be used for Assorter 55, Boxxser 55, CarryLite 55, Compact and drawer 250-3. Tray with 8 pieces.	47 x 220 x 160	Clear	12

Insert 55 A9-3



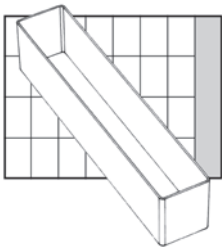
Item no.	Description	Size (HxWxD, mm)	Colour	Qt
114653	A9-3 insert. 30 per carton. Can also be used for Assorter 55, Boxxser 55, CarryLite 55, Compact and drawer 250-3. Made of polypropylene (PP).	47 x 39 x 163	Clear	30

Insert 55 6xA9-3 - in grid tray



Item no.	Description	Size (HxWxD, mm)	Colour	Qt
136426	Insert 55 A9-3. Can also be used for Assorter 55, Boxxser 55, CarryLite 55, Compact and drawer 250-3. Tray with 6 pieces.	47 x 238 x 168	Clear	12

Insert 55 A9-4



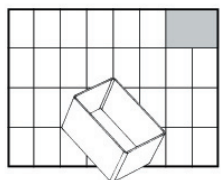
Item no.	Description	Size (HxWxD, mm)	Colour	Qt
114585	A9-4 insert. 24 per carton. Can also be used for Assorter 55, Boxxser 55, CarryLite 55, Compact and drawer 250-3. Made of polypropylene (PP).	47 x 39 x 218	Clear	24

Insert 55 4xA9-4 - in grid tray



Item no.	Description	Size (HxWxD, mm)	Colour	Qt
136433	Insert 55 A9-4. Can also be used for Assorter 55, Boxxser 55, CarryLite 55, Compact and drawer 250-3. Tray with 4 pieces.	47 x 220 x 160	Clear	12

Insert 55 A8-1



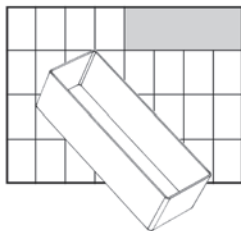
Item no.	Description	Size (HxWxD, mm)	Colour	Qt
105590	A8-1 insert. 48 per carton. Can also be used for Assorter 55, Boxxser 55, CarryLite 55, Compact and drawer 250-3. Made of polypropylene (PP).	47 x 55 x 79	Clear	48

Insert 55 8xA8-1 - in grid tray



Item no.	Description	Size (HxWxD, mm)	Colour	Qt
109888	Insert 55 A8-1. Can also be used for Assorter 55, Boxxser 55, CarryLite 55, Compact and drawer 250-3. Tray with 8 pieces..	47 x 220 x 160	Clear	12

Insert 55 A8-2



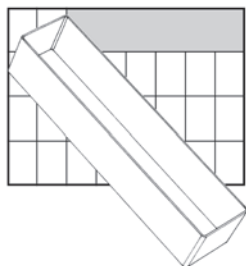
Item no.	Description	Size (HxWxD, mm)	Colour	Qt
114592	A8-2 insert. 24 per carton. Can also be used for Assorter 55, Boxxser 55, CarryLite 55, Compact and drawer 250-3. Made of polypropylene (PP).	47 x 55 x 157	Clear	24

Insert 55 4xA8-2 - in grid tray



Item no.	Description	Size (HxWxD, mm)	Colour	Qt
136457	Insert 55 A8-2. Can also be used for Assorter 55, Boxxser 55, CarryLite 55, Compact and drawer 250-3. Tray with 4 pieces.	47 x 220 x 160	Clear	12

Insert 55 A8-3



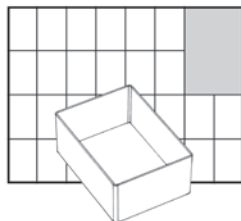
Item no.	Description	Size (HxWxD, mm)	Colour	Qt
114608	A8-3 insert. 15 per carton. Can also be used for Assorter 55, Boxxser 55, CarryLite 55, Compact and drawer 250-3. Made of polypropylene (PP).	47 x 55 x 235	Clear	15

Insert 55 3xA8-3 - in grid tray



Item no.	Description	Size (HxWxD, mm)	Colour	Qt
136464	Insert 55 A8-3. Can also be used for Assorter 55, Boxxser 55, CarryLite 55, Compact and drawer 250-3. Tray with 3 pieces.	47 x 238 x 168	Clear	12

Insert 55 A7-1



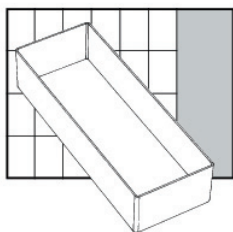
Item no.	Description	Size (HxWxD, mm)	Colour	Qt
105583	A7-1 insert. 24 per carton. Can also be used for Assorter 55, Boxxser 55, CarryLite 55, Compact and drawer 250-3. Made of polypropylene (PP).	47 x 79 x 109	Clear	24

Insert 55 4xA7-1 - in grid tray



Item no.	Description	Size (HxWxD, mm)	Colour	Qt
136471	Insert 55 A7-1. Can also be used for Assorter 55, Boxxser 55, CarryLite 55, Compact and drawer 250-3. Tray with 4 pieces.	47 x 220 x 160	Clear	12

Insert 55 A7-2



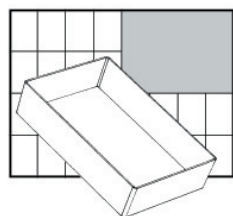
Item no.	Description	Size (HxWxD, mm)	Colour	Qt
103695	A7-2 insert. 12 per carton. Can also be used for Assorter 55, Boxxser 55, CarryLite 55, Compact and drawer 250-3. Made of polypropylene (PP).	47 x 79 x 218	Clear	12

Insert 55 2xA7-2 - in grid tray



Item no.	Description	Size (HxWxD, mm)	Colour	Qt
136488	Insert 55 A7-2. Can also be used for Assorter 55, Boxxser 55, CarryLite 55, Compact and drawer 250-3. Tray with 2 pieces.	47 x 220 x 160	Clear	12

Insert 55 A6-1



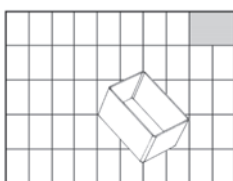
Item no.	Description	Size (HxWxD, mm)	Colour	Qt
105576	A6-1 insert. 12 per carton. Can also be used for Assorter 55, Boxxser 55, CarryLite 55, Compact and drawer 250-3. Made of polypropylene (PP).	47 x 109 x 157	Clear	12

Insert 55 2xA6-1 - in grid tray



Item no.	Description	Size (HxWxD, mm)	Colour	Qt
136495	Insert 55 A6-1. Can also be used for Assorter 55, Boxxser 55, CarryLite 55, Compact and drawer 250-3. Tray with 2 pieces.	47 x 220 x 160	Clear	12

Insert 80 BA8-1



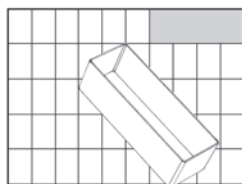
Item no.	Description	Size (HxWxD, mm)	Colour	Qt
119276	BA8-1 inserts. Can also be used for CarryLite 80 and Boxxser 80. 25 pcs. per CarryLite. Polypropylene (PP).	69 x 55 x 79	Clear	32

Insert 80 8xBA8-1 - in grid tray



Item no.	Description	Size (HxWxD, mm)	Colour	Qt
136501	Insert 80 BA8-1. Can also be used for CarryLite 80 and Boxxser 80. Tray with 8 pieces.	69 x 220 x 160	Clear	8

Insert 80 BA8-2



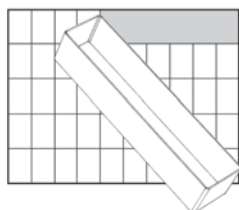
Item no.	Description	Size (HxWxD, mm)	Colour	Qt
119283	BA8-2 inserts. Can also be used for CarryLite 80 and Boxxser 80. Max. 10 pcs. per CarryLite. Polypropylene (PP).	69 x 55 x 157	Clear	16

Insert 80 4xBA8-2 - in grid tray



Item no.	Description	Size (HxWxD, mm)	Colour	Qt
136518	Insert 80 BA8-2. Can also be used for CarryLite 80 and Boxxser 80. Tray with 4 pieces.	69 x 220 x 160	Clear	8

Insert 80 BA8-3



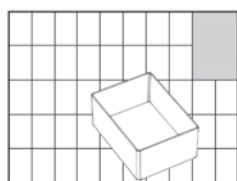
Item no.	Description	Size (HxWxD, mm)	Colour	Qt
119290	BA8-3 inserts. Can also be used for CarryLite 80 and Boxxser 80. Max. 5 pcs. per CarryLite. Polypropylene (PP).	69 x 55 x 235	Clear	9

Insert 80 3xBA8-3 - in grid tray



Item no.	Description	Size (HxWxD, mm)	Colour	Qt
136525	Insert 80 BA8-3. Can also be used for CarryLite 80 and Boxxser 80. Tray with 3 pieces.	69 x 238 x 168	Clear	8

Insert 80 BA7-1



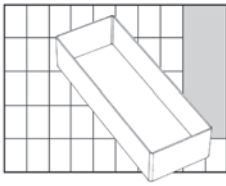
Item no.	Description	Size (HxWxD, mm)	Colour	Qt
119306	BA7-1 inserts. Can also be used for CarryLite 80 and Boxxser 80. Max. 10 pcs. per CarryLite. Polypropylene (PP).	69 x 79 x 109	Clear	16

Insert 80 4xBA7-1 - in grid tray



Item no.	Description	Size (HxWxD, mm)	Colour	Qt
136532	Insert 80 BA7-1. Can also be used for CarryLite 80 and Boxxser 80. Tray with 4 pieces.	69 x 220 x 160	Clear	8

Insert 80 BA7-2



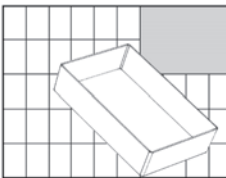
Item no.	Description	Size (HxWxD, mm)	Colour	Qt
119313	BA7-2 inserts. Can also be used for CarryLite 80 and Boxxser 80. Max. 5 pcs. per CarryLite. Polypropylene (PP).	69 x 79 x 218	Clear	8

Insert 80 2xBA7-2 - in grid tray



Item no.	Description	Size (HxWxD, mm)	Colour	Qt
136549	Insert 80 BA7-2. Can also be used for CarryLite 80 and Boxxser 80. Tray with 2 pieces.	69 x 220 x 160	Clear	8

Insert 80 BA6-1



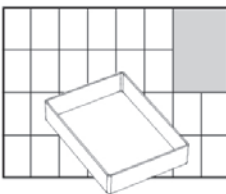
Item no.	Description	Size (HxWxD, mm)	Colour	Qt
119320	BA6-1 inserts. Can also be used for CarryLite 80 and Boxxser 80. Max. 4 pcs. per CarryLite. Polypropylene (PP).	69 x 109 x 157	Clear	8

Insert 80 2xBA6-1 - in grid tray



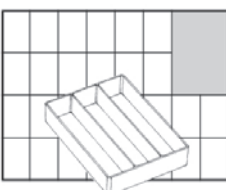
Item no.	Description	Size (HxWxD, mm)	Colour	Qt
136556	Insert 80 BA6-1. Can also be used for CarryLite 80 and Boxxser 80. Tray with 2 pieces.	69 x 220 x 160	Clear	8

Insert A71



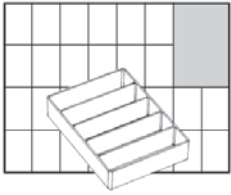
Item no.	Description	Size (HxWxD, mm)	Colour	Qt
115735	A71 insert. 48 per carton. Half-height insert. Can be used to sub-divide 250-3 drawer, Assorter and the Compact series. Made of polypropylene (PP).	24 x 79 x 109	Clear	48

Insert A73



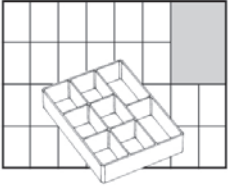
Item no.	Description	Size (HxWxD, mm)	Colour	Qt
115742	A73 insert. 48 per carton. Half-height insert. Can be used to sub-divide 250-3 drawer, Assorter and the Compact series. Made of polypropylene (PP).	24 x 79 x 109	Clear	48

Insert A75



Item no.	Description	Size (HxWxD, mm)	Colour	Qt
115759	A75 insert. 48 per carton. Half-height insert. Can be used to sub-divide 250-3 drawer, Assorter and the Compact series. Made of polypropylene (PP).	24 x 79 x 109	Clear	48

Insert A78



Item no.	Description	Size (HxWxD, mm)	Colour	Qt
115766	A78 insert. 48 per carton. Half-height insert. Can be used to sub-divide 250-3 drawer, Assorter and the Compact series. Made of polypropylene (PP).	24 x 79 x 109	Clear	48